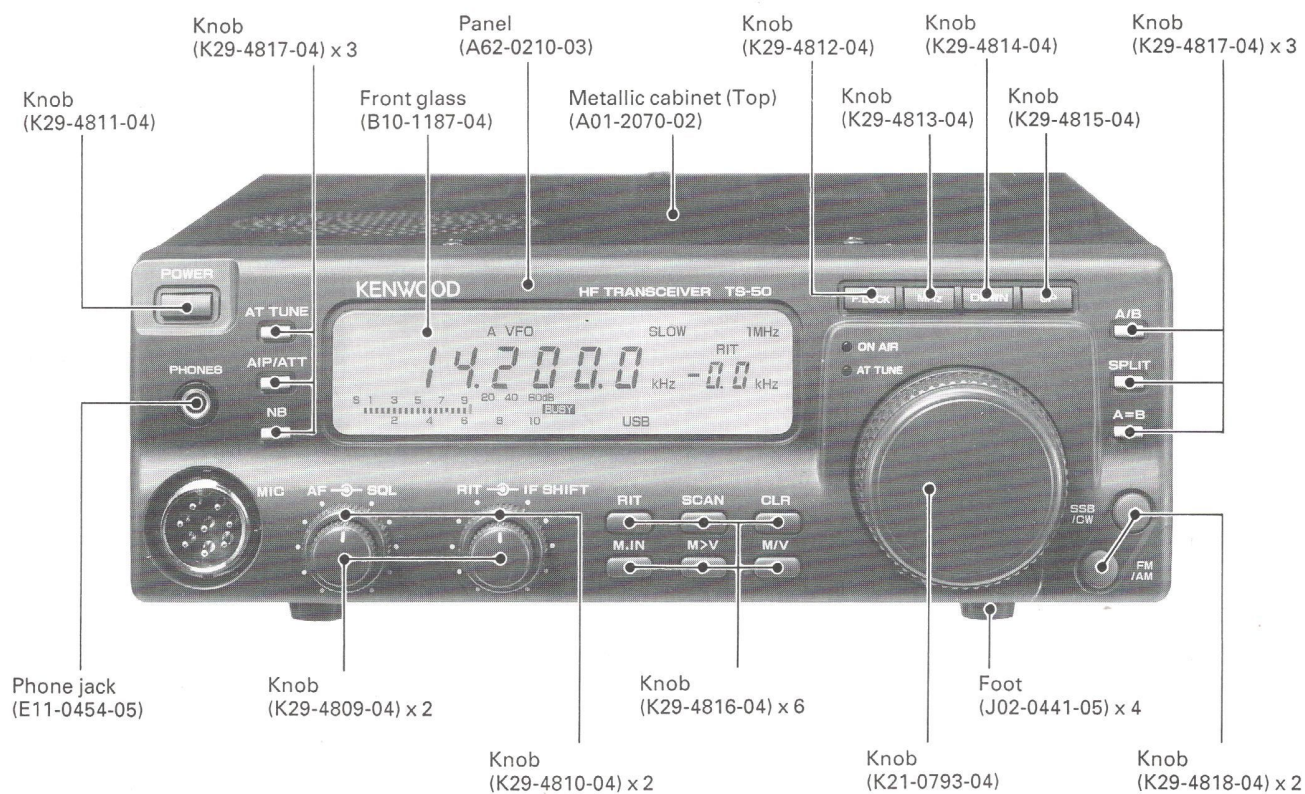
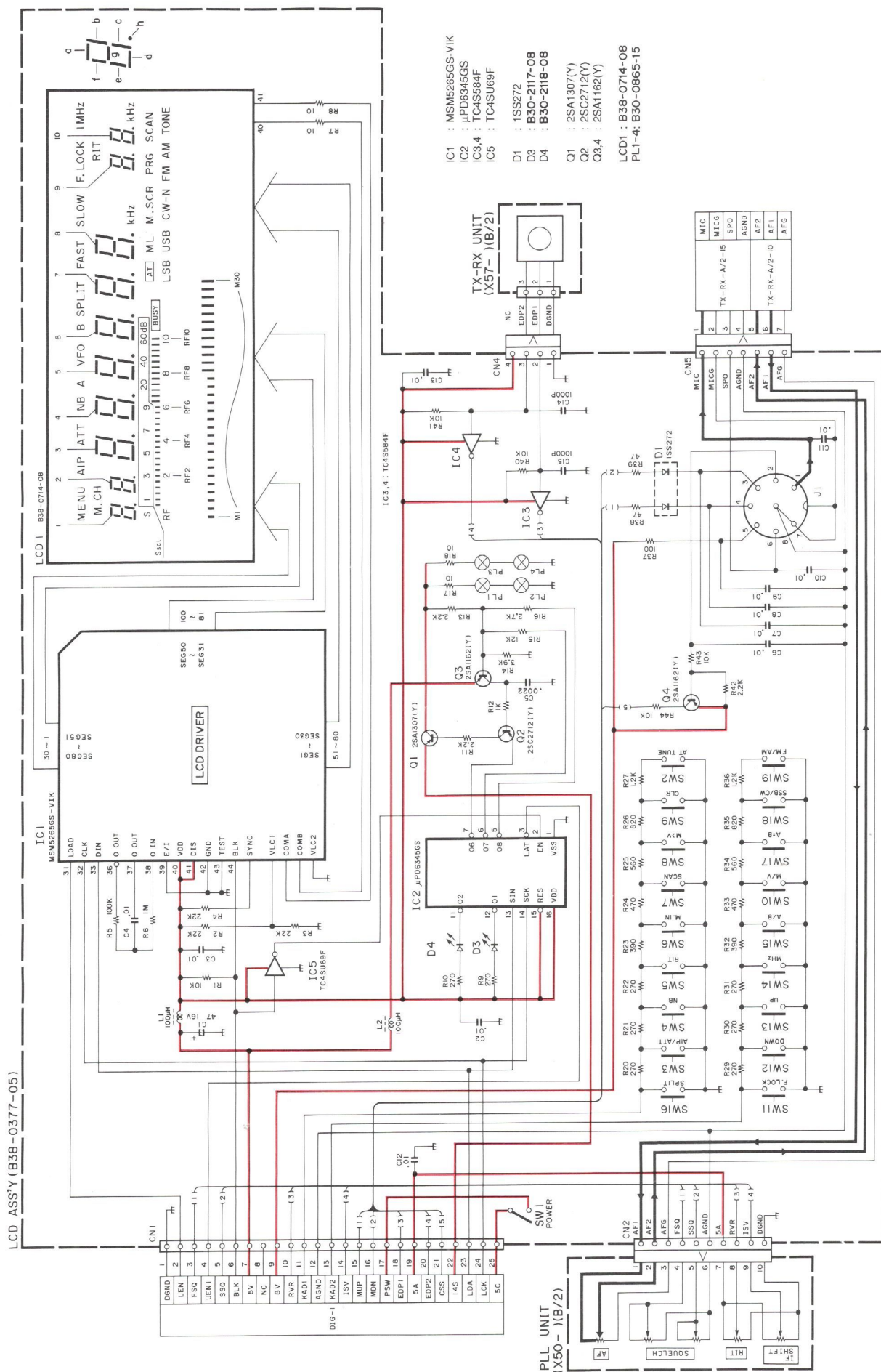


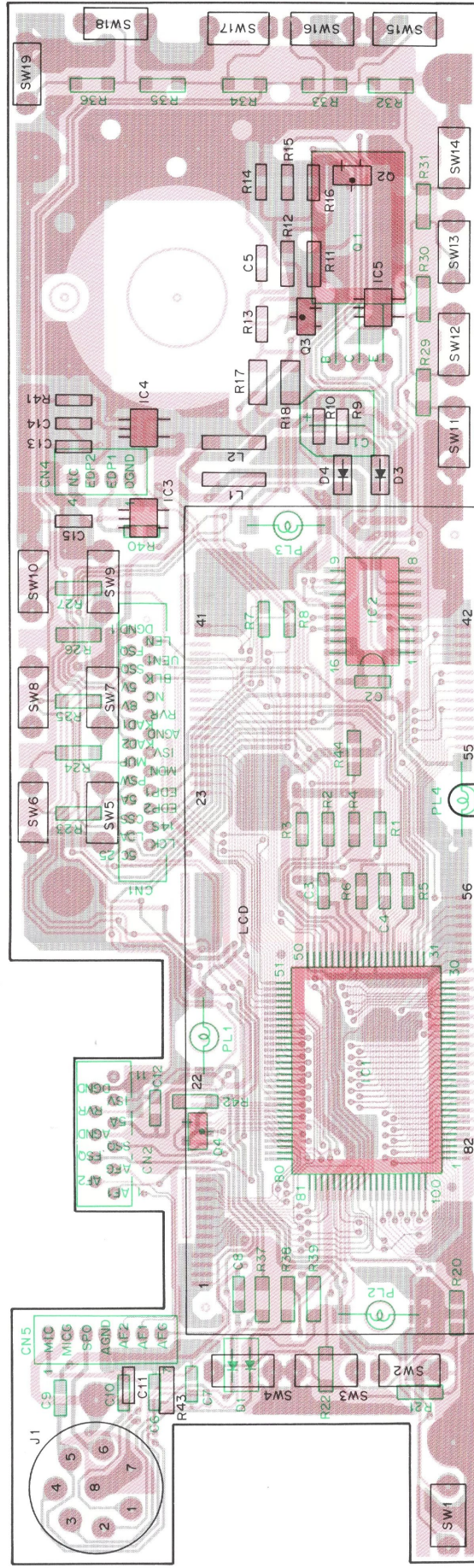
LCD ASSY (B38-0377-05)

This manual is issued for a supplementary reference of the LCD Assembly. For further information, please refer to the service manual (B51-8199-00).

TS-50S SCHEMATIC DIAGRAM



LCD ASSY (B38-0377-05) Foil side view



PARTS LIST

× New Parts

Parts without Parts No. are not supplied.

Les articles non mentionnés dans le Parts No. ne sont pas fournis.

Teile ohne Parts No. werden nicht geliefert.

LCD ASSY (B38-0377-05)

Ref. No. 参照番号	Address 位置	New Parts 新	Parts No. 部品番号	Description 部品名 / 規格	Desti- nation 仕向	Re- marks 備考
LCD ASSY (B38-0377-05)						
C1			C92-0040-05	ELECTRO 47UF 16WV		
C2 -4			CK73FB1H103K	CHIP C 0.010UF K		
C5			CK73FB1H223K	CHIP C 0.022UF K		
C6 -13			CK73EB1H103K	CHIP C 0.01UF K		
C14 ,15			CK73FB1H102K	CHIP C 1000PF K		
CN1			E23-0623-04	EARTH TERMINAL		
CN2		*	E40-5233-05	CONNECTOR (25P)		
CN4			E40-5398-05	CONNECTOR (11P)		
CN5			E40-3248-05	CONNECTOR (4P)		
			E40-3251-05	CONNECTOR (7P)		
J1			E06-0858-15	MIC CONNECTOR(8P)		
L1 ,2			L40-1011-18	CHOCK COIL (100UH)		
R1			RK73FB2A103J	CHIP R 10K J 1/10W		
R2 -4			RK73FB2A223J	CHIP R 22K J 1/10W		
R5			RK73FB2A104J	CHIP R 100K J 1/10W		
R6			RK73FB2A105J	CHIP R 1.0M J 1/10W		
R7 ,8			RK73EB2B223J	CHIP R 22K J 1/8W		
R9 ,10			RK73FB2A271J	CHIP R 270 J 1/10W		
R11			RK73EB2B222J	CHIP R 2.2K J 1/8W		
R12			RK73EB2B102J	CHIP R 1.0K J 1/8W		
R13			RK73FB2A222J	CHIP R 2.2K J 1/10W		
R14			RK73FB2A392J	CHIP R 3.9K J 1/10W		
R15			RK73FB2A123J	CHIP R 12K J 1/10W		
R16			RK73FB2A272J	CHIP R 2.7K J 1/10W		
R17 ,18		*	RK73EB2B100J	CHIP R 10 J 1/4W		
R20 -22			RK73EB2B271J	CHIP R 270 J 1/8W		
R23			RK73EB2B391J	CHIP R 390 J 1/8W		
R24			RK73EB2B471J	CHIP R 470 J 1/8W		
R25			RK73EB2B561J	CHIP R 560 J 1/8W		
R26			RK73EB2B821J	CHIP R 820 J 1/8W		
R27			RK73EB2B122J	CHIP R 1.2K J 1/8W		
R29 -31			RK73EB2B271J	CHIP R 270 J 1/8W		
R32			RK73EB2B391J	CHIP R 390 J 1/8W		
R33			RK73EB2B471J	CHIP R 470 J 1/8W		
R34			RK73EB2B561J	CHIP R 560 J 1/8W		
R35			RK73EB2B821J	CHIP R 820 J 1/8W		
R36			RK73EB2B122J	CHIP R 1.2K J 1/8W		
R37			RK73EB2B101J	CHIP R 100 J 1/8W		
R38 ,39			RK73EB2B470J	CHIP R 47 J 1/8W		
R40 ,41			RK73EB2A103J	CHIP R 10K J 1/10W		
R42			RK73FB2A222J	CHIP R 2.2K J 1/10W		
R43 ,44			RK73FB2A103J	CHIP R 10K J 1/10W		
SW1 ,2			S40-1079-05	TACT SWITCH		
SW3 -14			S40-1086-05	TACT SWITCH		
SW15			S40-1079-05	TACT SWITCH		
SW16 -19			S40-1086-05	TACT SWITCH		
D1			1SS272	DIOD		
D3		*	B30-2117-08	LED (RED)		
D4		*	B30-2118-08	LED (ORG)		
IC1			MSM5265GS-V1K	IC(LCD DRIVER)		
IC2			UPD6345GS	IC		

L:Scandinavia

K:USA

P:Canada

Y:PX(Far East, Hawaii)

T:England

E:Europe

Y:AAFES(Europe)

X:Australia

M:Other Areas

⚠ indicates safety critical components.

TS-50S

PARTS LIST

× New Parts

Parts without Parts No. are not supplied.

Les articles non mentionnés dans le Parts No. ne sont pas fournis.

Teile ohne Parts No. werden nicht geliefert.

LCD ASSY (B38-0377-05)

Ref. No. 参照番号	Address 位置	New Parts 新	Parts No. 部品番号	Description 部品名 / 規格	Desti- nation 仕向	Re- marks 備考
IC3 , 4 IC5 LCD1 PL1 -4 Q1			TC4S584F TC4SU69F B38-0714-08 B30-0865-15 2SA1307(Y)	IC(SCHMITT TRIGGER) IC(INVERTER GATE) LCD ELEMENT LAMP (6.3V 75mA) TRANSISTOR		
Q2 Q3 , 4			2SC2712(Y) 2SA1162(Y)	TRANSISTOR TRANSISTOR		

L:Scandinavia

K:USA

P:Canada

Y:PX(Far East, Hawaii)

T:England

E:Europe

Y:AAFES(Europe)

X:Australia

M:Other Areas

⚠ indicates safety critical components.

KENWOOD CORPORATION

Alive Mitake, 2-5, Shibuya 1-chome, Shibuya-ku, Tokyo 150, Japan

KENWOOD U.S.A. CORPORATION

COMMUNICATIONS & TEST EQUIPMENT GROUP

P.O. BOX 22745, 2201 East Dominguez St., Long Beach, CA 90801-5745, U.S.A.

KENWOOD ELECTRONICS DEUTSCHLAND GMBH

Rembrücker Str. 15, 6056 Heusenstamm, Germany

KENWOOD ELECTRONICS BENELUX N.V.

Mechelsesteenweg 418 B-1930 Zaventem, Belgium

TRIO-KENWOOD FRANCE S.A.

13, Boulevard Ney, 75018 Paris, France

TRIO-KENWOOD U.K. LIMITED

KENWOOD House, Dwight Road, Watford, Herts., WD1 8EB United Kingdom

KENWOOD ELECTRONICS NEDERLAND B.V.

Amsterdamseweg 35, 1422 AC Uithoorn, The Netherlands

KENWOOD LINEAR S.p.A.

20125, Milano-via Arbe, 50, Italy

KENWOOD ESPAÑA S.A.

Bolivia, 239-08020 Barcelona, Spain

KENWOOD ELECTRONICS AUSTRALIA PTY. LTD.

(A.C.N. 001 499 074)

P.O. Box 504, 8 Figtree Drive, Australia Centre, Homebush, N.S.W. 2140, Australia

KENWOOD & LEE ELECTRONICS, LTD.

Unit 3712-3724, Level 37, Tower one Metroplaza, 223 Hing Fong Road, Kwai Fong, N.T., Hong Kong

KENWOOD ELECTRONICS CANADA INC.

6070 Kestrel Road, Mississauga, Ontario, Canada L5T 1S8